



Family, Domestic, Sexual Violence and Child Sexual Abuse (FDSV) Training and Link Worker Support Program

Capital Health Network (CHN), ACT's Primary Health Network (PHN), has funded and partnered with local specialist family, domestic, and sexual violence (FDSV) organisations, to deliver the FDSV Training and Link Worker Support Program in the ACT.

Funded by

phn
ACT

An Australian Government Initiative

**Capital
Health
Network**
Partnering for better health



What is the FDSV Training and Link Worker Support Program?

Specifically designed for primary health care professionals (GPs, dentists, nurses and other allied health professionals), the program aims to empower practices and foster an environment where anyone experiencing FDSV feels heard, believed and supported throughout their care journey.

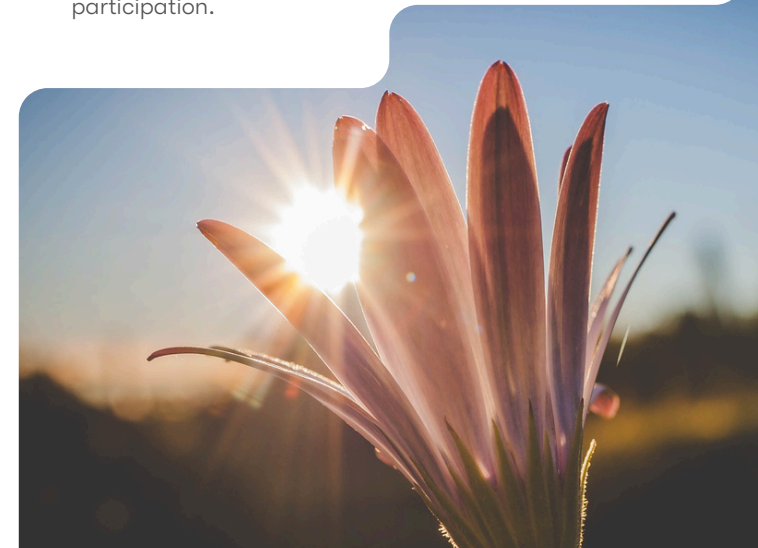
It supports primary health care professionals to recognise and respond to early signs of FDSV through:

- a range of FDSV training and workforce capacity building resources for the 'whole-of-practice' (clinical and non-clinical staff).
- access to specialist FDSV workers called Link Workers, embedded within local FDSV organisations and available to provide one-stop FDSV referral advice and support.

Key Program Elements

1. Training

- ✓ 3 RACGP-accredited, tailored and trauma-informed foundational training sessions on appropriately recognising, responding to, and referring people experiencing FDSV:
 - 2-hour Domestic and Family Violence (DFV) Training
 - 1.5-hour Sexual Violence (SV) Training
 - 2-hour Child Sexual Abuse (CSA) Training
- ✓ Additional in-depth training sessions on specific topics, tailored to the needs and interests of primary health care professionals:
 - Working with People Using Violence
 - Harmful Sexual Behaviours in Children and Young People
 - Non-fatal Strangulation
 - Coercive Control
- Training sessions have been co-designed by FDSV Link Workers and CHN's Family Safety Team, expertly advised by a GP with lived experience and special interest in FDSV.
- Training is co-delivered by Link Workers and CHN's GP Advisor, wherever possible, with flexible offerings (in-person/online, before/during/after-hours).
- Participants to receive Continuing Professional Development (CPD) hours and a certificate of attendance for their participation.



2. Organisational Supports and Resources

- ✓ Tailored FDSV resources (e.g. flowcharts, factsheets, role-play videos, posters) for primary care.
- ✓ Quality improvement activities (e.g. access to advice on practice-level FDSV policies and procedures, and information on mandatory requirements).
- ✓ Communities of Practice (regular online meetings bringing together GPs and other clinicians to network, share knowledge and facilitate case study discussions).
- ✓ Networking Dinner Events: In-person education events bringing together GPs and other clinicians to network, collaborate and share learnings.

3. Link Worker Support

FDSV Link Workers can serve as a one-point-of-referral for primary health care professionals to refer patients impacted by family, domestic, sexual violence, including child sexual abuse.

Link Workers can improve integration between primary health care and the FDSV sector and enhance service navigation for victim-survivors by facilitating coordination of warm referrals to relevant support services.

The range of supports offered by Link Workers include:

- ✓ In-person practice visits to build meaningful relationships with health professionals and assist in the post-training support and implementation of quality improvement activities.
- ✓ General and/or patient-specific FDSV advice in-person or over the phone.
- ✓ De-identified case consultations and individualised referral advice.
- ✓ Providing initial case coordination, risk assessment and safety planning for victim-survivors, followed by warm referrals to appropriate support and services.
- ✓ Feedback on the referral outcomes (with patient consent).
- ✓ Debriefing support for health professionals and other practice staff.



4. Key program benefits

- ✓ Access to incentivised trainings, resources and supports for 'whole-of-practice'.
- ✓ Enhanced confidence, skills and readiness to recognise and respond appropriately to FDSV.
- ✓ In-depth knowledge, understanding and awareness of the role of primary care in addressing FDSV.
- ✓ Mastery of respectful inquiry strategies and mechanisms to support victim-survivors.
- ✓ Improved awareness of relevant mandatory responses under ACT legislation in relation to FDSV.
- ✓ Improved understanding of relevant referral pathways.
- ✓ Improved partnerships and trust between primary care and the FDSV sector.

Who can get involved?

This opportunity is open to any general practice, allied health practice and dental practice in the ACT region, including Aboriginal Community Controlled Health Organisations. Medical and allied health staff and students across ACT universities are also welcome to access the program offerings.



How to access the program?

For general enquiries and/or if you are interested in submitting an Expression of Interest (EOI) to participate in the FDSV Training and Link Worker Support Program, please contact CHN's Family Safety Team.



familysafety@chnact.org.au



02 6287 8080; 02 6287 8027



chnact.org.au/for-health-professionals/family-domestic-and-sexual-violence-pilot-program

If you are a health professional, and would like to refer your patient to the FDSV Workers, please use the referral form on our website.



This activity is part of the Supporting Primary Care Sector Response to Family, Domestic, Sexual Violence, and Child Sexual Abuse (FDSV) Program, supported by funding from the ACT PHN through the Australian Government's PHN program.