

Mental Health Multidisciplinary Services Program EOI Briefing

26 May 2026

phn
ACT

An Australian Government Initiative

**Capital
Health
Network**

Partnering for better health

Acknowledgement of Country



“I acknowledge the Ngunnawal people as the traditional custodians of the land on which we meet today and pay our respects to the Elders past, present, and emerging. I also extend that respect to any First Nations people joining us today.”

“Sunrise to Sunset” artwork by Sarah Richards was created to reflect CHN’s cultural journey to date and their Cultural Competency Framework (CCF). See our [website](#) for more information.

Introduction

1. Briefing session introduction, overview and process
2. Introduction to Capital Health Network (CHN)
3. Mental Health Multidisciplinary Services Program overview
4. Scope of services
5. Funding allocation
6. EOI requirements
7. Procurement and establishment timeline
8. Questions

Introduction to Capital Health Network

Capital Health Network (CHN) is the Primary Health Network (PHN) for the ACT. PHNs have been established by the Australian Government with the key objectives of:

- Increasing the efficiency and effectiveness of health services for patients, particularly those at risk of poor health outcomes, and
- Improving coordination of care to ensure patients receive the right care in the right place at the right time.

We do this through 3 core functions:

- Commissioning
- Capacity building
- Coordination

Mental Health Multidisciplinary Services Program

- This grant opportunity seeks to deliver multidisciplinary care to people with complex mental health needs by embedding Mental Health Multidisciplinary Practitioners within primary care environments.
- Practitioners will provide individualised support to program participants based on their unmet needs, factors impacting their mental health, and the Practitioner's scope of practice.
- These activities will also involve close collaboration between allied health, GPs and Mental Health Multidisciplinary Practitioners to provide effective, wrap-around care for people with complex mental health needs.



Scope of Services

Element 1: Mental Health Multidisciplinary Practitioners and service delivery

- Employment, management, and support of Mental Health Multidisciplinary Practitioners.
 - Eligible Mental Health Multidisciplinary Practitioners include: social workers, occupational therapists, clinically qualified and registered counsellors and psychotherapists, psychologists, nurses (including mental health nurses), First Nations mental health workers, social and emotional wellbeing workers, peer workers.
- Delivery of individualized, trauma-informed, and culturally sensitive care to people with complex mental health needs across hubs, satellites, and outreach locations.
- Development of program processes with input from stakeholders, undertaking quality improvement initiatives based on consumer feedback, and supporting performance and outcome reporting.

Scope of Services

Element 2: Hosting Mental Health Multidisciplinary Practitioners onsite at a primary health care service (*Note: GPs, ACCHOs and primary care only*)

- Allocating physical space for Mental Health Multidisciplinary Practitioners to operate within existing primary care services.
 - This program aims to embed Mental Health Multidisciplinary Practitioner/s within 'hub' locations across the ACT for approximately 3-4 days per week. However, this program will also look to provide limited in-reach to other 'satellite' primary care services to support community access.
- Providing operational support associated with onsite needs and welcoming program participants.
- Encouraging GPs working onsite to engage with the program and collaborative care opportunities.

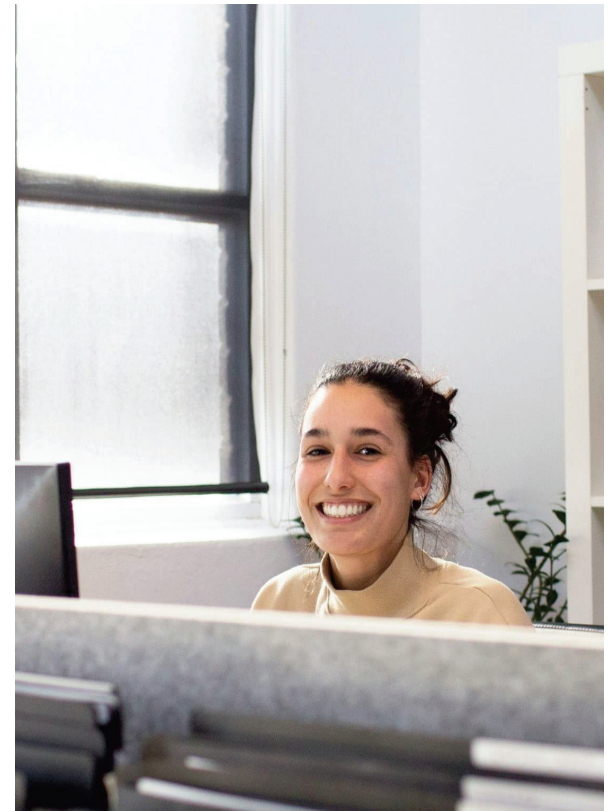
Scope of Services

Element 3: Administrative program management

- Supporting the Program's Mental Health Multidisciplinary Practitioners, GPs, and participants by providing centralised administrative functions, including managing intake, referrals, and appointment scheduling.

Element 4: Data and reporting management

- Centralised management of all program data, including data collation, management, quality review, processing, and reporting.
- Developing data sharing agreements with other sites ensuring compliance with data privacy legislation regarding data collection, storage and use.



Scope of Services – Service Model

- The final service model will be specified in the RFP and will depend on the outcome of the EOI process.
- One or multiple providers, including both primary care and allied health services, may be successful in **Element 1** (Mental Health Multidisciplinary Practitioners and service delivery).
 - Practitioners will work across multiple sites, and may be employed and hosted by separate organisations.
- Multiple providers may be successful in **Element 2** (Hosting Mental Health Multidisciplinary Practitioners onsite at a primary health care service), likely in a hub, satellite and/or outreach model.
 - Applicants who are not successful in being selected as a ‘hub’ location may be contacted to discuss in-reach service delivery as a ‘satellite’ or outreach location.

Scope of Services – Service Model

- The program will be centrally administered, including managing intake, referrals and appointment scheduling.
- GPs and other primary care providers across the ACT may refer clients to the program, regardless of whether or not they are engaged in the program. Additional referral pathways may be considered in response to program operational needs.
 - Referring GPs will be expected to participate in case conferencing activities to support collaborative, continuous, and high-quality care.
- All service providers who are successful in any Element will be expected to work collaboratively to support the success of the program.



Funding allocation

Specific total funding amounts will be confirmed in RFP documentation.

Funding provided will be required to be used for:

- Employment costs for Mental Health Multidisciplinary Practitioners, administrative support, and data management roles, as well as training and clinical supervision.
 - Five full time equivalent Mental Health Multidisciplinary Practitioners positions, working across multiple sites.
 - One full time equivalent service delivery administration position.
 - 0.8 full time equivalent data management position.
- Support payments for GP practices, primary care practices, and/or ACCHOs who host Mental Health Multidisciplinary Practitioners onsite and engage with the program.
- Service establishment, ongoing administration and data management costs.

This funding is time limited. Therefore, the sustainability of the program and impacts on activities beyond the funding period must be considered.

EOI Requirements

Section	Requirements	Word limit
1. Relevant Experience and Capability		
1.1 Element 1: Mental Health Multidisciplinary Practitioners and service delivery	If responding yes, please: A) Provide a high-level summary of your experience and capability in supporting multidisciplinary professionals to deliver holistic care, including for consumers with complex mental health needs. B) Provide a high-level summary of your proposed model of care, including what types of Mental Health Multidisciplinary Providers you would employ, what services they would provide to clients, and how the service would integrate with other mental health services.	A) 300 words B) 300 words
1.2. Element 2: Hosting Mental Health Multidisciplinary Practitioners onsite at a primary care service	If responding yes, please provide a high-level summary of your experience and capability in integrating multidisciplinary care into primary care services.	300 words
1.3. Element 3: Administrative program management	If responding yes, please provide a high-level summary of your experience and capability in providing effective and timely administrative support for a healthcare program or service.	200 words
1.4. Element 4: Data and reporting management	If responding yes, please provide a high-level summary of your experience and capability in data management, processing, and reporting, including any engagement with formal evaluation activities. Please also include your experience and relevant accreditation (for example ISO27001) that supports your ability to ensure compliance with data privacy legislation in relation to data collection, storage and use.	400 words
1.5. Service delivery considerations	Please describe how your organisation would ensure the provision of respectful, trauma-informed, and culturally sensitive care to all program participants (within the scope of your indicated service delivery elements).	500 words
1.6. Eligibility Criteria	Please provide information regarding organisation type and willingness to participate in collaborative elements of the program.	-

EOI Requirements

Section	Requirements	Word limit
2. Assurances and Compliance		
2.1 Conflict of Interest	Provide details of any interests, relationships or clients which may or do give rise to a conflict of interest and the area of expertise in which that conflict or potential conflict does or may arise, plus details of any strategies for preventing and/or managing conflicts of interest (actual or perceived).	100 words
2.2 Risk management and mitigation strategies	Provide details of all risk management strategies and practices of the Applicant that would be applicable or relevant in the context of the supply of goods and/or services.	250 words
2.3 Insurance information:	Provide details of all relevant insurances maintained by the Applicant.	-
2.4 Accreditation/Registration/Certification	Provide relevant details as appropriate.	-
2.5 Referees	Provide details of two referees.	-

Procurement and establishment timelines

Following this EOI process, selected applicants will be given the opportunity to respond to a Request for Proposal (RFP). This RFP will require applicants to submit a proposal on how they intend to deliver the program elements they have been shortlisted for.

1	EOI Opens	Monday 11 May 2026
2	End of Period for questions	Monday 1 June 2026
3	EOI closes	Friday 5 June 2026
4	RFP Opens	June 2026
5	RFP Closes	July 2026
6	Commence program establishment activities	August / September 2026
7	Service commencement	October 2026
8	Project end date	30 June 2028

Questions?

End of period for questions or requests for information: 5.00 pm, 01/06/2025

Tenders@chnact.org.au